

[Total No. of Pages : 2

54016

Final M.Sc. Nursing (Mental [Psychiatric] Health Nursing)
Examination, (Phase - III) Summer - 2023

MENTAL [PSYCHIATRIC] HEALTH NURSING - II

Total Duration : 3 Hours

Total Marks : 75

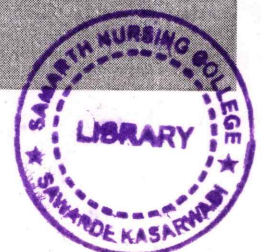
- Instructions :**
- 1) Use **black** ball point pen only.
 - 2) **Do not** write anything on the **blank portion of the question paper**. If written anything, such type of act will be considered as an attempt to resort to unfair means.
 - 3) **All** questions are **compulsory**.
 - 4) The number to the **right** indicates **full marks**.
 - 5) Draw diagrams **wherever** necessary.
 - 6) Distribution of syllabus in Question Paper is only meant to cover entire syllabus within the stipulated frame. The Question paper pattern is a mere guideline. Questions can be asked from any paper's syllabus into any question paper. Students cannot claim that the Question is out of syllabus. As it is only for the placement sake, the distribution has been done.
 - 7) Use a common answerbook for all sections.

SECTION - I (38 Marks)

1. Long answer question : [3+4+5=12]
 - a) Define OCD. [3]
 - b) Describe different types of phobias. [4]
 - c) Explain the management of patient with anxiety disorder. [5]
2. Long answer question : [2+4+5=11]
 - a) Define psychosis. [2]
 - b) Describe clinical features of schizophrenia. [4]
 - c) Explain the nursing management of a patient with mania. [5]
3. Short answer question (any three out of five): [3×5=15]
 - a) Paranoid personality disorder
 - b) Etiology and classification of mentally challenged
 - c) Adjustment disorder
 - d) Grief reaction
 - e) Cognitive behavior therapy

N - 1661

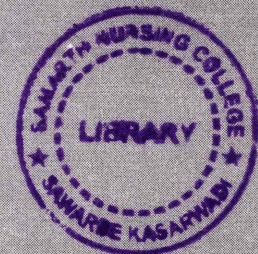
P.T.O.



54016

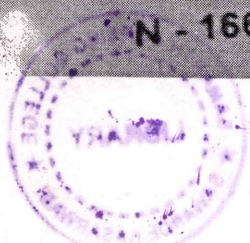
SECTION - II (37 Marks)

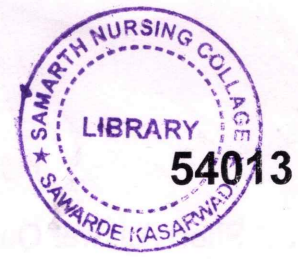
4. Long answer question: [3+4+5=12]
- a) Define bipolar disorder I and II. [3]
 - b) Discuss types of sleep disorders. [4]
 - c) Explain nursing management of patient with dementia. [5]
5. Long answer question: [4+6=10]
- a) Discuss role of a nurse in preventive psychiatry. [4]
 - b) Discuss prevention and management of suicide. [6]
6. Short answer question (any three out of five): [3×5=15]
- a) Crisis intervention
 - b) Psychiatric emergencies
 - c) Milieu therapy
 - d) Paraphilias
 - e) Nursing management of violent patient



N - 1661

-2-





**Final M.Sc. Nursing (Obstetric and Gynaecological Nursing)
Examination, (Phase - III) Winter- 2023
OBSTETRICS & GYNAECOLOGICAL NURSING - II**

Total Duration : 3 Hours

Total Marks : 75

- Instructions :**
- 1) Use **black** ball point pen only.
 - 2) **Do not** write anything on the **blank portion of the question paper**. If written anything, such type of act will be considered as an attempt to resort to unfair means.
 - 3) **All questions are compulsory.**
 - 4) The number to the **right** indicates **full** marks.
 - 5) Draw diagrams **wherever** necessary.
 - 6) Distribution of syllabus in Question Paper is only meant to cover entire syllabus within the stipulated frame. The Question paper pattern is a mere guideline. Questions can be asked from any paper's syllabus into any question paper. Students cannot claim that the Question is out of syllabus. As it is only for the placement sake, the distribution has been done.
 - 7) **Use** a common answerbook for **all** sections.

SECTION - I (38 Marks)

1. Long answer question: [3+4+5=12]
 - a) Mrs. Sujata 50yrs old grand multipara was admitted in the Gynaec ward with c/o third degree uterine prolapse, Cystocele, Rectocele. List the causes of Genital prolapse in Mrs. Sujata's case. [3]
 - b) Enumerate the Clinical manifestation of Mrs. Sujata. [4]
 - c) Explain in detail Management for Mrs. Sujata. [5]

2. Long answer question: [2+4+5=11]
 - a) A 25-year-old primigravida with 31 weeks of gestation had come to the antenatal clinic with c/o painless vaginal bleeding. List the causes of antepartum haemorrhage. [2]
 - b) Distinguish between placenta praevia and Abruptio placenta (4 points each). [4]
 - c) Discuss antenatal management for the above case. [5]



54013

3. Short Answer Questions (Any three out of five): [3×5=15]

- a) Birth Injuries.
- b) Oxytocin.
- c) Induction of Labour.
- d) Post partum Blues.
- e) Janani shishu suraksha yojana.

SECTION - II (37 Marks)

4. Long Answer Question : [3+4+5=12]

- a) Mrs. Anu 22 year old admitted with high grade fever and foul smelling vaginal discharge with h/o Home delivery
List the predisposing factors for her condition. [3]
- b) Write investigation to be carried out in Mrs. Anau's case. [4]
- c) Discuss Management in Anus case. (medical, surgical and nursing) [5]

5. Long Answer Question : [4+6=10]

- a) Write causes of Male and Female Infertility. [4]
- b) List the infertility investigations. Write about Assisted Reproductive technology. [6]

6. Short Answer Questions (Any three out of five): [3×5=15]

- a) Rh Isoimmunization.
- b) Polyhydramnios.
- c) Safe birth practices.
- d) Neonatal Infections.
- e) Contracted pelvis.





**Final M.Sc. Nursing Medical Surgical Nursing: (Cardio Vascular and Thoracic Nursing)/(Critical Care Nursing)/(Oncology Nursing)/(Neurosciences Nursing)/(Nephro-Urology Nursing)/(Orthopedic Nursing)/(Gastro-Enterology Nursing)/(Community Health Nursing)/(Obstetric and Gynaecological Nursing)/(Paediatric (Child Health) Nursing)/(Mental (Psychiatric) Health Nursing)/(Medical Surgical Nursing : HIV/AIDS Nursing)
Examination, (Phase - III) Winter- 2023**

NURSING MANAGEMENT - I

Total Duration : 3 Hours

Total Marks : 75

- Instructions :**
- 1) Use **black** ball point pen only.
 - 2) **Do not** write anything on the **blank portion of the question paper**. If written anything, such type of act will be considered as an attempt to resort to unfair means.
 - 3) **All** questions are **compulsory**.
 - 4) The number to the **right** indicates **full** marks.
 - 5) Draw diagrams **wherever** necessary.
 - 6) Distribution of syllabus in Question Paper is only meant to cover entire syllabus within the stipulated frame. The Question paper pattern is a mere guideline. Questions can be asked from any paper's syllabus into any question paper. Students cannot claim that the Question is out of syllabus. As it is only for the placement sake, the distribution has been done.
 - 7) Use a common answerbook for **all** sections.

SECTION - I (38 Marks)

1. Long answer question: [3+4+5=12]
- a) Define Law & ethics [3]
 - b) Describe equipment procurement [4]
 - c) Enumerate types of budget and explain advantages of budget [5]



2. Long answer question: [2+4+5=11]
- a) Define supervision [2]
 - b) What are the principles and scope of administration [4]
 - c) Describe in detail about waste treatment and disposal of biomedical waste in hospital. [5]
3. Short answer question (any three out of five): [3×5=15]
- a) SWOT analysis
 - b) VED analysis
 - c) Quality management cycle
 - d) Ethics in clinical research
 - e) Nursing audit

SECTION - II (37 Marks)

4. Long answers question: [3+4+5=12]
- 1/2 a) What is collective bargaining? [3]
 - 2 b) Enumerate different motivational techniques for motivating the nursing staff in a hospital and discuss Which theory of motivation will you apply and why? [4]
 - c) Explain legal aspects of medical records and nurses responsibility in maintaining records. [5]
5. Long answers question: [4+6=10]
- 2 a) Describe how to maintain quality in patient care. [4]
 - 3 b) Describe in detail essentials of hospital planning. [6]
6. Short answer question (any three out of five): [3×5=15]
- 2 a) Occupational Hazards
 - b) Delegation
 - 2 c) Staff development program
 - d) Current issues in Nursing
 - 2 e) Performance appraisal



[Total No. of Pages : 2

54011

Final M.Sc. Nursing/(Medical Surgical Nursing : Orthopedic
Nursing/Medical Surgical Nursing : Gastro Enterology Nursing/
Community Health Nursing/Obstetric And Gynaecological
Nursing/Paediatric [Child Health] Nursing/Mental [Psychiatric]
Health Nursing/Medical Surgical Nursing : HIV /Aids Nursing/
Medical Surgical Nursing : Cardio Vascular and Thoracic
Nursing/Medical Surgical Nursing : Critical Care Nursing/
Medical Surgical Nursing : Oncology Nursing/Medical Surgical
Nursing : Neurosciences Nursing/Medical Surgical Nursing :
Nephro-Urology Nursing Examination, (Phase - III) Summer - 2023
NURSING MANAGEMENT

Total Duration : 3 Hours

Total Marks : 75

- Instructions :**
- 1) Use black ball point pen only.
 - 2) Do not write anything on the blank portion of the question paper. If written anything, such type of act will be considered as an attempt to resort to unfair means.
 - 3) All questions are compulsory.
 - 4) The number to the right indicates full marks.
 - 5) Draw diagrams wherever necessary.
 - 6) Distribution of syllabus in Question Paper is only meant to cover entire syllabus within the stipulated frame. The Question paper pattern is a mere guideline. Questions can be asked from any paper's syllabus into any question paper. Students cannot claim that the Question is out of syllabus. As it is only for the placement sake, the distribution has been done.
 - 7) Use a common answerbook for all sections.

SECTION - I (38 Marks)

1. Long answer questions : [3+4+5=12]
- a) List the functions of central council of health at the national level. [3]
 - b) Explain the Panchayat Raj agency at the block level. [4]
 - c) Discuss the role and responsibilities of the state superintendent or director of nursing services in enhancement of quality health care. [5]

P.T.O.

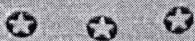
N - 1650



2. Long answer questions : 54011
- a) What is management? [2+4+5=11]
- b) Explain the advantages of good management in a health services. [2]
- c) Describe the physical facilities and equipments required to start a 10 bedded new critical care unit in 100 beds hospital. [4]
- [5]
3. Short answer questions (any three out of five): [3×5=15]
- a) Responsibilities of head nurse in management of safe environment for patient and personnel.
- b) Describe the responsibilities of the nursing supervisor in the clinical area.
- c) Organizational culture for excellence.
- d) Management by objective (MBO).
- e) Current trends and issues in nursing administration.

SECTION - II (37 Marks)

4. Long answer questions: [3+4+5=12]
- a) Essential competencies for nurse manager. [3]
- b) Describe the motivational style of leadership. [4]
- c) Define nursing audit according to Ellison and explain its purposes and advantages. [5]
5. Long answers questions: [4+6=10]
- a) Importance of philosophy, aims, and objectives of nursing school. [4]
- b) Explain the components of orientation program to newly appointed staff nurses in critical care unit. [6]
6. Short answer questions (any three out of five): [3×5=15]
- a) Legal safeguard in nursing practices.
- b) Techniques to improve communication.
- c) Barrier to decision making.
- d) Primary nursing care.
- e) Quality assurance activities in a hospital.



N - 1650

-2-



[Total No. of Pages : 3

540120



**Final M.Sc. Nursing (Medical Surgical Nursing : Oncology Nursing)
Examination, (Phase - III) Winter- 2023
ONCOLOGY NURSING -II**

Total Duration : 3 Hours

Total Marks : 75

- Instructions :**
- 1) Use **black** ball point pen only.
 - 2) **Do not** write anything on the **blank portion of the question paper.** If written anything, such type of act will be considered as an attempt to resort to unfair means.
 - 3) **All questions are compulsory.**
 - 4) The number to the **right** indicates **full** marks.
 - 5) Draw diagrams **wherever** necessary.
 - 6) Distribution of syllabus in Question Paper is only meant to cover entire syllabus within the stipulated frame. The Question paper pattern is a mere guideline. Questions can be asked from any paper's syllabus into any question paper. Students cannot claim that the Question is out of syllabus. As it is only for the placement sake, the distribution has been done.
 - 7) Use a common answerbook for **all** sections.

SECTION - A (38 Marks)

1. Long answer question:

[3+4+5=12]

Arjun, a 45-year-old labourer who was working in an asbestos factory, is admitted to the oncology unit with a diagnosis of Stage 3-Squamous cell carcinoma of the lungs. He has two children aged 10 years and 12 years. His wife is a maid servant.

- a) Elaborate on the stages of Lung Cancers.
- b) Discuss the investigations that have to be carried out to confirm the diagnosis.
- c) Enumerate the Chemotherapy regimens used in the treatment of Lung cancer. Elaborate the Nurses role in preparation, administration and management of Chemotherapeutic drugs.

N - 6082

P.T.O.

54012C

2. Long answer question:

[2+4+5=11]

Raju, a 11-year-old, is admitted with a diagnosis of Acute Lymphocytic Leukemia and is posted for Bone marrow transplantation.

- a) Write briefly about the types of Bone marrow transplantation.
- b) Elaborate on the preparation of donor and recipient of Bone marrow transplantation.
- c) Explain the phases of Leukemia treatment. Which symptoms would indicate to Raju's parents that they must seek immediate medical advice.

3. Short Answer Questions (Any three out of five)

[3×5=15]

- a) Write Briefly about Management of symptoms in a terminally ill cancer patient.
- b) Common side effects of Tele therapy.
- c) Post laryngectomy rehabilitation.
- d) Explain health education for patients with permanent colostomy.
- e) Write a short note on Non pharmacological Pain management in palliative care.

SECTION - B (37 Marks)

4. Long Answer Question

[3+4+5=12]

Answer the following questions with relation to Gastrointestinal carcinomas.

- a) Enumerate the risk factors for oral carcinomas.
- b) Explain Postoperative care of a post subtotal gastrectomy patient in the first 48 hours.
- c) Role of the nurse in caring for patient undergoing Targeted Therapy for GI cancers.