



Shri Vithalrao Joshi Charities Trust's
SAMARTH NURSING COLLEGE
(NAAC ACCREDITED GRADE 'B')
Kasarwadi, Post Sawarde, Tal. - Chiplun, Dist. - Ratnagiri 415 606
Phone : 02355-264149 / 137, 8379972264 Fax : 02355-264181
Email : sncdervan@gmail.com
Website : www.svjctsamarthnursing.com

(Recognised by Indian Nursing Council, Maharashtra Nursing Council & Maharashtra University of Health Sciences, Nashik and MSBNPE Board, Mumbai)

6.1.2 EFFECTIVE LEADERSHIP IS REFLECTED IN VARIOUS INSTITUTIONAL PRACTICES SUCH AS DECENTRALIZATION AND PARTICIPATIVE MANAGEMENT

Response:

The institution functions as per the guidelines given by MUHS, Nashik. Different committees at institute level are formulated. The institute focuses on

Academics: it concentrates on proper planning, implementation and monitoring of academic activities. Hundred percent syllabuses are covered both for theory and practical and the academic results are good, curricular activities: students actively participate in various activities organized by the institute like cultural programs, sports, camp, various days' celebration etc.



Shri Vithalrao Joshi Charities Trust's
SAMARTH NURSING COLLEGE

(NAAC ACCREDITED GRADE 'B')

Kasarwadi, Post Sawarde, Tal. - Chiplun, Dist. - Ratnagiri 415 606

Phone : 02355-264149 / 137, 8379972264 Fax : 02355-264181

Email : snedervan@gmail.com

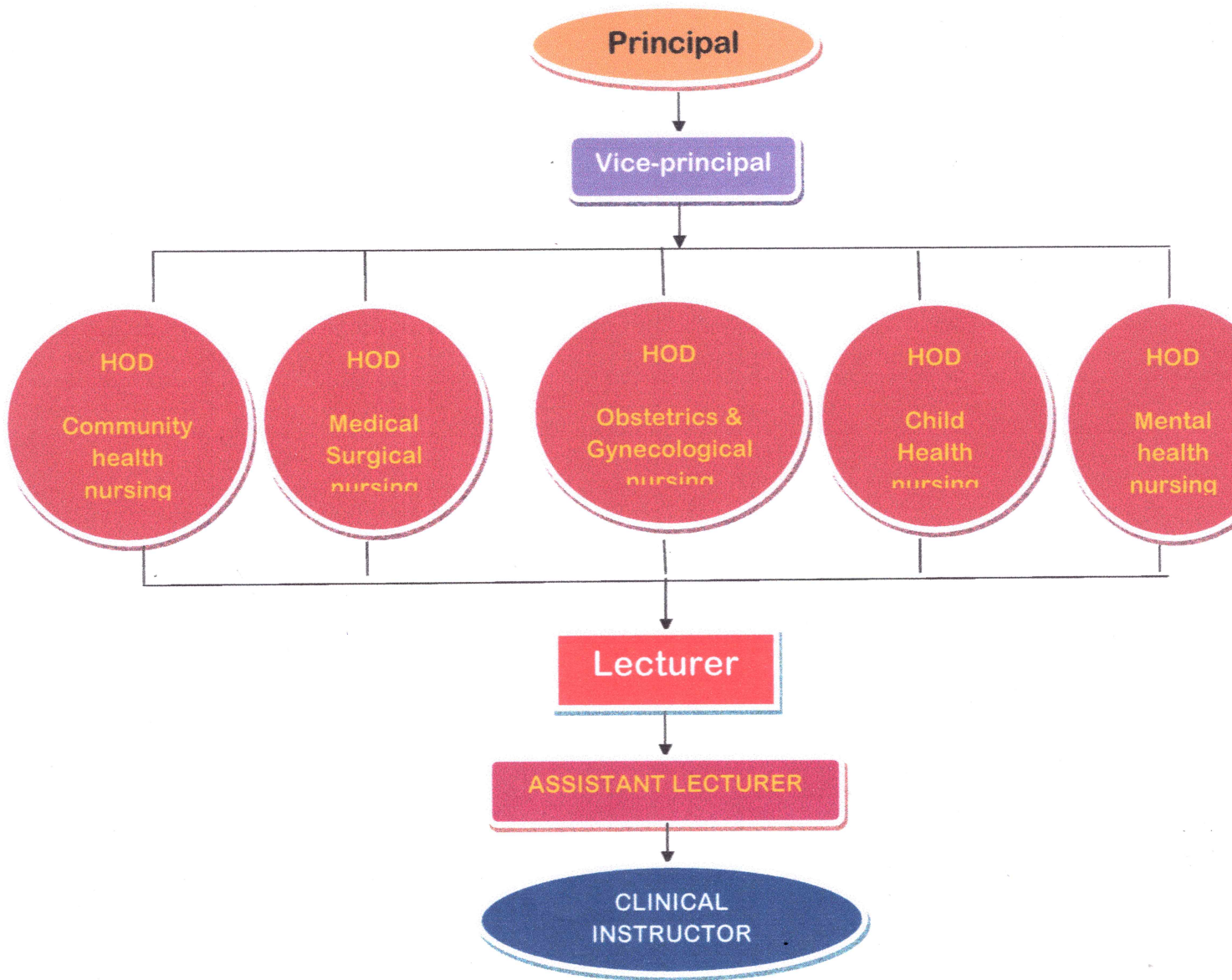
Website : www.svjctsamarthenursing.com

(Recognised by Indian Nursing Council, Maharashtra Nursing Council & Maharashtra University of Health Sciences, Nashik and MSBNPE Board, Mumbai)

Decentralization:

The institution has General Bodies for deciding the policies are decided and implemented.

Thereafter, the policies are implemented through Principal by giving responsibilities to various committees.





Shri Vitthalrao Joshi Charities Trust's
SAMARTH NURSING COLLEGE
(NAAC ACCREDITED GRADE 'B')
Kasarwadi, Post Sawarde, Tal. - Chiplun, Dist. - Ratnagiri 415 606
Phone : 02355-264149 / 137, 8379972264 Fax : 02355-264181
Email : sncdervan@gmail.com
Website : www.svjctsamarthnursing.com

(Recognised by Indian Nursing Council, Maharashtra Nursing Council & Maharashtra University of Health Sciences, Nashik and MSBNPE Board, Mumbai)

Job responsibilities

Principal:

- Concentrates on academic growth of the institute.
- Admission of students as per set criteria by MUHS, Nashik.
- Maintenance of discipline in college.
- Assisting in planning and implementation of academic programs.
- Administration and supervision of curricular and co-curricular activities.
- Supervision of college and University examination, setting of question paper for the College Examination, assessment of answer papers and any other work related to examination.
- Safeguard the interest of teaching/non-teaching staff members.
- Managing the college, library, laboratory and hospital for clinical exposure.
- Participation in teaching work, research and training program of the college.
- Encouraging and motivating the faculty in conducting research and publication.
- Cooperates with hospital departmental heads and participates in hospital programs.
- Monitors proper system of record.
- Offers counseling and guidance to faculty and students.

Vice-Principal:

- Relieves Principal in his/her absence or leave.
- Serves as a faculty member in the college and assist in the planning.
- Participates in classroom and clinical teaching activity.
- Helps in maintenance of records.
- Coordinates with clinical records of the students with concerned HOD's.
- Participates and organizes extracurricular activities.



Shri Vithalrao Joshi Charities Trust's
SAMARTH NURSING COLLEGE
(NAAC ACCREDITED GRADE 'B')
Kasarwadi, Post Sawarde, Tal. - Chiplun, Dist. - Ratnagiri 415 606
Phone : 02355-264149 / 137, 8379972264 Fax : 02355-264181
Email : sncdervan@gmail.com
Website : www.svjetsamarthnursing.com

(Recognised by Indian Nursing Council, Maharashtra Nursing Council & Maharashtra University of Health Sciences, Nashik and MSBNPE Board, Mumbai)

- Offers guidance and counseling to the students.
- Supervises the faculty.

HOD/ Professor/ Asso. Prof

- Plans, co-ordinates with other faculty in the department for implementation of curriculum both theory and clinical.
- Prepares monthly plan for the clinical requirements.
- Updates procedure manual periodically.
- Records performance in written examination.
- Acts as a role model in clinical practice and classroom activities.
- Participates in organizing extracurricular activities.
- Supervises nursing students in classroom and clinical areas.
- Maintains records like attendance and absenteeism.
- Assigns the lectures for the teachers.

Lecturer/ Assistant Lecturer:

- Establishes learning objectives.
- Develops appropriate teaching aids to impart quality education.
- Teaches, supervises in the classroom, laboratory and clinical areas.
- Records performance in written examination.
- Acts as a role model to the students.
- Participates in organizing extracurricular activities.
- Offers guidance and counseling to the students.
- Carries out any other duties as per the requirement of college.
- Participates as a member on various committee of the institution.

Clinical Instructor:



Shri Vitthalrao Joshi Charities Trust's
SAMARTH NURSING COLLEGE
(NAAC ACCREDITED GRADE 'B')
Kasarwadi, Post Sawarde, Tal. - Chiplun, Dist. - Ratnagiri 415 606
Phone : 02355-264149 / 137, 8379972264 Fax : 02355-264181
Email : sncdervan@gmail.com
Website : www.svjctsamarthenursing.com

(Recognised by Indian Nursing Council, Maharashtra Nursing Council & Maharashtra University of Health Sciences, Nashik and MSBNPE Board, Mumbai)

- Develops appropriate teaching aids to impart quality education.
- Teaches, supervises in the classroom, laboratory and clinical areas.
- Participates in organizing extracurricular activities.
- Offers guidance and counseling to the students.
- Carries out any other duties as per the requirement of college.
- Supervises students in the clinical areas.

Participative Management:

The institution has a participative management mechanism for the timely redressal of student grievances including sexual harassment and ragging cases which include committee like Students' Grievance Redressal Committee, Sexual Harassment Prevention Committee and Anti-ragging Committee. In all these committees the approach of management is participative. In decision making process the Medical Director of Hospital & Medical College, Nursing Superintendent from Hospital, Social Worker, Administrative Officer and Principal, faculties and students from the Samarth Nursing College participate actively. This makes the faculty accountable and capable to take appropriate actions. Recruitment of candidates is carried out through prescribed procedure and the eligible candidates are selected.

B.K.L.W. Hospital since 14 years, conducts medical camp every year for 1 week in collaboration with UK Medical Team. In this journey, Samarth Nursing College plays a very important participatory role starting from inviting the guest, medical staff, till their departure which includes detailed communication, proper schedule of programmes, conduction of CNE in Nursing College, Clinical teaching programmes in hospital settings, etc.

In these ways our institution promotes a culture of participative management which helps in strong decision making which in turn helps in providing quality education to students and quality care to patients.




Shri Vithalrao Joshi Charities Trust's
SAMARTH NURSING COLLEGE
(NAAC ACCREDITED GRADE 'B')
Kasarwadi, Post Sawarde, Tal. - Chiplun, Dist. - Ratnagiri 415 606
Phone : 02355-264149 / 137, 8379972264 Fax : 02355-264181
Email : sncdervan@gmail.com
Website : www.svjctsamarthenursing.com

(Recognised by Indian Nursing Council, Maharashtra Nursing Council & Maharashtra University of Health Sciences, Nashik and MSBNPE Board, Mumbai)

LEVELS OF PARTICIPATIVE MANAGEMENT

1. BORS Committee.
2. Ethical Committee.
3. Grievances Redressal Committee.
4. Anti – Ragging Committee.
5. Examination Committee.
6. Website Committee
7. Admission Committee.
8. Sexual Harassment Prevention Committee.




Principal
Samarth Nursing College
Kasarwadi, Sawarde,
Tal. Chiplun, Dist. Ratnagiri 415606